



2023 COLLECTION



Designed & Developed In Spain



INDEX

ABOUT US	6
ColorADD	8
MIPS®	9
HELMETS	10
ROAD	
WHISPER - <i>New for 2023</i>	
MIXINO EVO	
KILAUJA	
VENTO	
RAPID	
MTB	
YELMO	
LEAF	
ALL ROAD	
KOMPACT'O	
KITTEN	
SHOES	54
ROAD	
MIXINO RC1	
WHISPER R1	
MTB	
WHISPER X1	
SPARE PARTS	70
ACCESSORIES	72
MERCHANDISING	75
SIZE GUIDE	79
TECHNOLOGIES	80
RANGE OVERVIEW	84



ABOUT US

Founded in Spain in 1996. Catlike is specialized in the design, development, and production of high-performance cycling helmets, shoes, and accessories.

With over 20 years of commitment to excellence and advancement in helmet technology, Catlike has mastered the making of cycling helmets to the highest industry standards. Their recognition through innumerable presences on worldwide podiums and the success of models that became iconic representations of our true passion for the sport made us realize that our mission is far from over and must prevail in the future.

Building what we believe to be a remarkable path for the future, we present Catlike's new approach to cycling for 2023. This is the dawn of a new, robust, and bold product line, marked by contemporary design, on-trend colors, and enhanced performance. After years of rigorous research driven by the needs of athletes in an ever-demanding society and fast-paced market, we have taken the responsibility to go further, to dare to be better, and to provide our athletes with the highest standards of quality, safety, and performance that will fulfill their rigorous riding goals.

ColorADD

DO YOU KNOW THAT COLORBLINDNESS AFFECTS APPROXIMATELY EVERY 1 IN 12 MEN AND 1 IN 200 WOMEN?

The color alphabet ColorADD is a unique, universal, inclusive, and non-discriminative language that enables the colorblind to identify colors, with a wide spectrum of use on companies/entities whenever color is a factor of identification, orientation, or choice.

HOW DOES IT WORK?

Together with the colors of our products, you will find this alphabet in which each color is equal to a symbol.

Not everyone sees colors in the same way, so with the use of this alphabet we will be able to literate and normalize this difference.

STEP INTO THE WORLD OF ColorADD ALPHABET

COLORS . SYMBOLS



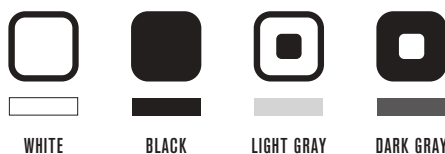
LIGHT TONES



DARK TONES



WHITE . BLACK . GRAY



METALIZED TONES



MIPS®



Catlike and MIPS® share the same passion when it comes to protecting and providing extra safety for demanding cyclists. That is why we have joined our product range with MIPS® Evolve and MIPS® Air Node technologies.

We are continuously working to improve the performance of our helmets with the use of MIPS® superior technology. Our development team works closely with MIPS® to implement their technology into our helmets, resulting in an optimized low-friction layer integration that has minimal impact on the comfort and ventilation of the helmets.

WHAT IS MIPS®?

The MIPS® safety system is designed to provide added safety for helmets in many accidents. For certain impacts, the MIPS® system can reduce harmful forces that might otherwise be transferred to the user's head.

HOW DOES THE MIPS® SAFETY SYSTEM WORK?

The MIPS® safety system features a low-friction layer inside a bike helmet that allows a multi-directional movement of 10-15mm on certain angled impacts, intended to help reduce rotational force to the head. This scientifically proven technology features a rotational management that can lower the energies transferred to the head during an impact or crash.



1 | Traditional helmets are designed and tested for straight impacts, but most impacts are angled, which can cause rotational motion to the head.

The rotational motion can cause brain injuries.

2



3 | The Low Friction Layer is intended to help the rotational motion to the head in certain angled impacts.

MIPS® EVOLVE

The MIPS® Evolve is a rotational management system that not only can lower the energies transferred to the head during an impact or crash, but does this with added style, comfort and fit. The system consists of a Low Friction Layer (LFL) that is less than 1mm thick with a low friction coating that lessens the friction towards the energy absorbing layer.

MIPS® AIR NODE

The MIPS® Air Node is integrated into the padding of the helmet and enables the 10-15mm of relative movement between the energy absorbing layer and the padding. This relative movement is enabled by having a backing of polycarbonate PC with a special low friction treatment and being held by specially designed fixations enabling movement in all directions. By being integrated into the padding the system is as light as it gets and designed to fit each specific helmet and size.

HELMETS

HELMETS

FOR UNBEATABLE PERFORMANCE



TIAGO ANTUNES
2022

THE REBIRTH



OF

A LEGEND

RACE COMP ROAD HELMET

WHISPER

Mips



The new Whisper represents the beginning of a new chapter for Catlike's helmet range. It retains the same value proposition that made the first Whisper, launched in 2006, such a successful helmet: an outstanding ventilation performance with a very distinctive design proposition.

This helmet brings the pro ventilation performance of our high-end models to a more comfortable package. The fitting was fine-tuned to increase compatibility with every athlete. The Whisper features an internal polymer roll cage that distributes the energy from an impact through the whole helmet,

while the MIPS® low friction layer boosts safety on angled impacts.

To complement the superb comfort level, it features a totally new fit system, developed to increase ponytail compatibility and support to the occipital area.

RACE COMP ROAD HELMET

WHISPER

Mips

MIPS® EVOLVE

Rotational management system that not only can lower the energies transferred to the head during an impact or crash, but also does this with added style, comfort and fit.

NEW ERGONOMIC STRAP DIVISOR

New divisor designed with ergonomic in mind. Its superior comfort enhance the helmet fitting and stability.

LCP

Lateral polyamide roll cage that increases impact resistance and stiffness while maintaining excellent ventilation properties and low weight.

MPS OVAL FIT SYSTEM

Developed to increase pony-tail compatibility and support to the occipital area.



FEATURES

In-mold construction with 2 shells
 Internal polymer roll-cage for increased structural rigidity
 MIPS® Evolve low friction layer
 Sunglasses garage and pony-tail compatibility

SIZE

SM 50-54cm | 19.7 - 21.2"
MD 54-59cm | 21.2 - 23.2"
LG 59-62cm | 23.2 - 24.4"

ACCESSORIES

Extra paddings
 Catlike bag

COLORS

LIMESTONE GLOSS



Mips

SM 7100700015
MD 7100700014
LG 7100700013

STAR WHITE GLOSS



Mips

SM 7100700012
MD 7100700011
LG 7100700010

RED GLOSS / BLACK MATTE



Mips

SM 7100700009
MD 7100700008
LG 7100700007

BLACK FOREST / METAL MATTE



Mips

SM 7100700006
MD 7100700005
LG 7100700004

MERCURY / BLACK MATTE



Mips

SM 7100700003
MD 7100700002
LG 7100700001

TECHNOLOGIES



C A T L I K E T E C H

ADVANCED VENTILATION PERFORMANCE

For most, a good comfortable fit, low-weight construction and distinctive design are the deciding factors when choosing a cycling helmet.

Catlike helmets combine these must-have requirements with industry-leading ventilation performance. The deeply recessed air channels direct the airflow around your head, pulling heat and sweat while maintaining low noise levels and reduced aerodynamic drag.

This technology allows us to create the coolest and lightest helmets in the market.





MIXINO | EVO

Mips

Catlike

RACE PRO ROAD HELMET

MIXINO EVO



This top of the range helmet is an evolution of the original Mixino helmet, which was developed together with our professional athletes to create the most ventilated, lightweight, and safest road bike helmet.

The Mixino Evo was redesigned to be even more ventilated, almost 40% of its frontal area is open. The front 18 air inlets direct the flow of air around the rider's head through improved air channels, exiting through the more efficient rear vents with heat and sweat from your head.

Comfort was improved with a better fitting and with the use of MIPS® Air Node, which also boost its safety score to another level. The helmet is constructed using an aramid roll cage inside the EPS liner that increases the structural rigidity and distributes the impact force of a crash across a larger volume of material thus reducing the energy transmitted to the head.

RACE PRO ROAD HELMET

MIXINO EVO

ARAMID ROLL CAGE

The aramid roll cage is the “skeleton” that works to dissipate the energy of an impact through the whole helmet, increasing its energy absorption. This structure also helps to hold the helmet together in the event of a crash.

VDIVISOR

Exclusive divisor that keeps the retention straps away from your ears granting you maximum comfort during usage.

MINIMUM WEIGHT

With only 230g, Mixino Evo will make you forget you are wearing a helmet. It excels itself in ventilation and weight.

MIPS® AIR NODE

The most ventilation focused solution. Dressed as a padding and specifically developed to help reduce rotational energies otherwise transferred to the head during an impact.



FEATURES

Outstanding ventilation, almost 40% of the frontal area is open to a total of 18 air inlets and 20 air outlets connect with airflow channels

Honeycomb in-mold construction infused with internal aramid roll cage for increased rigidity and impact energy absorption

Lower-volume construction for better aerodynamics in flat stages

MIPS® Air Node low friction padding – lower weight and better comfort without compromising the ventilation or safety

MPS EVO fit system – flexible 4-point adjustment system

3M rear reflective decal

Sunglasses holder compatibility

SIZE

SM 52 - 54 cm | 20.5 - 21.3"

MD 55 - 57 cm | 21.7 - 22.4"

LG 58 - 60 cm | 22.8 - 23.6"

WEIGHT

MD 230g | 0.50lb

ACCESSORIES

Extra paddings

Catlike bag

COLORS

POPPY SEED MATTE



Mips

SM 7100200003

MD 7100200002

LG 7100200001

BRILLIANT WHITE MATTE



Mips

SM 7100200006

MD 7100200005

LG 7100200004

MALACHITE GREEN MATTE



Mips

SM 7100200009

MD 7100200008

LG 7100200007

CITADEL MATTE



Mips

SM 7100200012

MD 7100200011

LG 7100200010

SAILOR BLUE MATTE



Mips

SM 7100200015

MD 7100200014

LG 7100200013

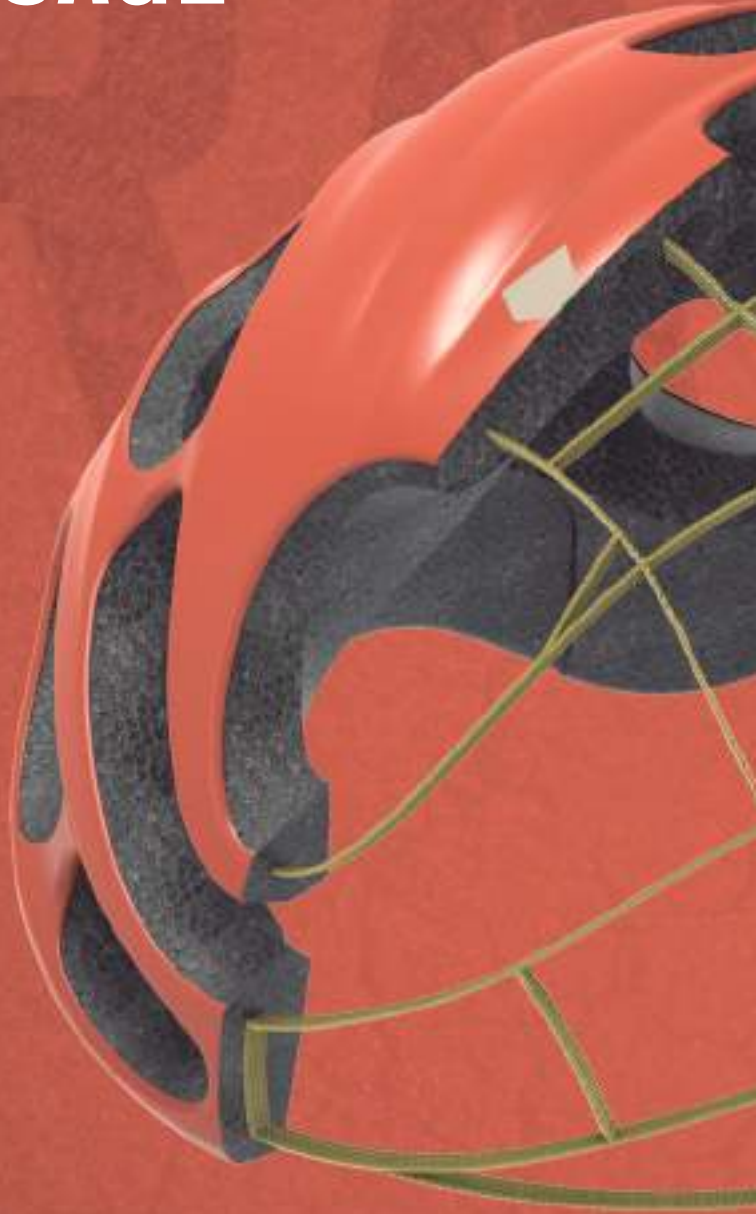
TECHNOLOGIES



HELMETS

C A T L I K E T E C H

ARAMID ROLL CAGE





The aramid roll cage is the “skeleton” that works to dissipate the energy of an impact through the whole helmet structure, thus increasing its energy absorption capacity at a reduced helmet volume and weight. This structure will also help to hold the helmet together in the event of a crash.

This technology, which was first developed with the Mixino helmet back in 2011, is constructed using aramid fibers. Aramid is a strong, light and very resilient material that is widely used in ballistic body protections and across the aerospace industry, on demanding applications.

This technology is now featured in our top of the range helmets to improve the safety of our athletes.

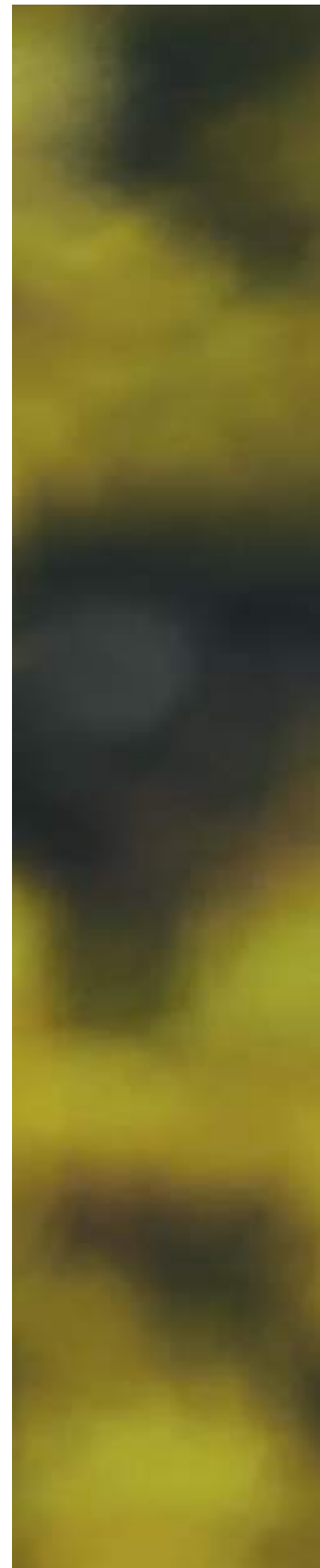
ALL ROUNDER PRO ROAD HELMET

KILAUEA

The Kilauea is our answer for those who just demand only the best compromise between aerodynamic performance and ventilation, all wrapped in an outstanding comfortable and safe package.

This unique lightweight top of the range helmet brings a different approach to our pro road range, with smoother top and side surfaces that reduce aerodynamic drag and noise levels. A good ventilation performance is retained by the deep internal air flow channels, designed to pull cold air from the upper rear inlets which will help remove hot and moist air around your head.

The Kilauea is constructed using an aramid roll cage inside the EPS liner that increases structural rigidity and distributes the impact force of a crash across a larger volume of material thus reducing the energy transmitted to the head. Safety is also improved with the use of MIPS® low friction layer, that reduces the energy transferred to the head during an impact or crash, while its comfortable fit will make you feel super secure while speeding along the fast flat stages.





ALL ROUNDER PRO ROAD HELMET

KILAUEA

Mips

HEXAGON CONSTRUCTION

The air intakes have been strategically positioned so that any impact will affect more than one internal structure: in the event of a crash, the energy generated will be spread through the honeycomb type structure, significantly increasing the head's protection.

ARAMID ROLL CAGE

The aramid roll cage is the "skeleton" that works to dissipate the energy of an impact through the whole helmet, increasing its energy absorption. This structure also helps to hold the helmet together in the event of a crash.



SUPERIOR AIRFLOW

Kilauea has been designed with 24 ventilation channels to allow great air flow while maintaining the highest safety level.

MIPS® EVOLVE

Rotational management system that not only can lower the energies transferred to the head during an impact or crash, but also does this with added style, comfort and fit.

FEATURES

Best compromise between ventilation and aerodynamics. Total of 10 air inlets and 14 air outlets connect with airflow channels

In-mold construction infused with internal aramid roll cage for increased rigidity and impact energy absorption

MIPS® Evolve low friction layer

MPS EVO fit system – flexible 4-point adjustment system

Adjustable side Vdivisor that keeps the straps away from your ears

3M rear reflective decal

SIZE

SM 52 - 54 cm | 20.5 - 21.3"

MD 55 - 57 cm | 21.7 - 22.4"

LG 58 - 60 cm | 22.8 - 23.6"

WEIGHT

MD 240g | 0.53lb

ACCESSORIES

Extra paddings

Catlike bag

COLORS

BLACK MATTE *



SM 7100100003

MD 7100100002

LG 7100100001

WHITE GLOSS *



SM 7100100006

MD 7100100005

LG 7100100004

GOLD FLAME MATTE



Mips

SM 7100100024

MD 7100100023

LG 7100100022

GREEN MATTE



Mips

SM 7100100027

MD 7100100026

LG 7100100025

TECHNOLOGIES



* These colors are not available with MIPS® technology

C A T L I K E T E C H

HIGH-END AERODYNAMICS





Minimum drag with efficient ventilation – the cycling holy grail for every pro rider. When facing the long flat stages, every possible time-saving measure is crucial.

The large vent-to-surface area ratio and efficient ventilation channels inside our helmets allow cool air to flow around your head and effectively cool you without harming performance. These results are only possible due to the advanced materials used in our manufacturing processes that allow us to reduce the helmet volume without compromising aerodynamic performance.

Our helmets are subjected to extensive analysis and rigorous testing during their development phase to meet the highest standards of performance, protection, and ventilation.

Many years of experience have shaped our quality control processes into a complete package to deliver the best product to the market.



AERO COMP ROAD HELMET

VENTO

Mips

The Vento boast our best aerodynamic performance for road use, making it the best ally on the asphalt.

With a design focused on aerodynamics, Vento makes use of its smooth profile to reduce air drag. This helmet shines on the more racier riding positions, where you will feel the effects of the low drag combined with low levels of noise during fast paced rides.

Despite its focus on aerodynamic, Vento

also reveals a good ventilation capacity, making use of the top rear aileron to pull cold air from above the head to increase thermal efficiency without sacrificing aerodynamics.

The Vento is also constructed with a simpler variation of the aramid roll cage that distributes the impact force of a crash across a larger volume of material thus reducing the energy transmitted to the head. Safety is also improved with the use of MIPS® low friction layer.

AERO COMP ROAD HELMET

VENTO



ARAMID ROLL CAGE

The aramid roll cage is the “skeleton” that works to dissipate the energy of an impact through the whole helmet, increasing its energy absorption. This structure also helps to hold the helmet together in the event of a crash.



AERODYNAMIC PERFORMANCE

The large vent-to-surface area ratio and efficient ventilation channels inside the helmet allow cool air to flow around your head and effectively cool you without harming performance.

MIPS® EVOLVE

Rotational management system that not only can lower the energies transferred to the head during an impact or crash, but also does this with added style, comfort and fit.

FEATURES

- Focused on aerodynamics
- Reduced drag and noise levels
- Good ventilation performance - total 11 air inlets and 8 air outlets
- In-mold construction with internal aramid roll cage for increased impact energy absorption
- MIPS® Evolve low friction layer
- MPS EVO fit system – flexible 4-point adjustment system
- Adjustable side Vdivisor that keeps the straps away from your ears
- 3M rear reflective decal

SIZE

- SM 52 - 54 cm | 20.5 - 21.3"
- MD 55 - 57 cm | 21.7 - 22.4"
- LG 58 - 60 cm | 22.8 - 23.6"

WEIGHT

- MD 250g | 0.55lb

ACCESSORIES

- Extra paddings
- Catlike bag

COLORS

BLACK MATTE *



- SM 7100300003
- MD 7100300002
- LG 7100300001

WHITE GLOSS *



- SM 7100300006
- MD 7100300005
- LG 7100300004

RED METALLIC GLOSS / BLACK MATTE



Mips

- SM 7100300024
- MD 7100300023
- LG 7100300022

GRAY METALLIC GLOSS / BLACK MATTE



Mips

- SM 7100300027
- MD 7100300026
- LG 7100300025

SATIN-CHAMELEON METALLIC GLOSS / BLACK MATTE



Mips

- SM 7100300030
- MD 7100300029
- LG 7100300028

TECHNOLOGIES



* These colors are not available with MIPS® technology





TIME TRIAL PRO HELMET

RAPID

Designed inside the wind-tunnel, in collaboration with the University of Granada, Rapid is an aerodynamic super-efficient time trial helmet.

Available in completely closed version - Rapid -, for the fast and short time trials and in a ventilated version - Rapid Tri -, for longer and hotter races, and for triathlon.

The Rapid Tri version adds two ventilation channels around the top of the head and two around each ear.

Both versions use a magnetic coupling visor, that is easily removable and an anti-fog and anti-scratch treatment.

TIME TRIAL PRO HELMET

RAPID



COLORS

CHRONO / PURE BLACK MATTE



SM 7100800006

MD 7100800005

LG 7100800004

CHRONO / BRIGHT WHITE GLOSS



SM 7100800009

MD 7100800008

LG 7100800007

FEATURES

The choice between the best aerodynamic performance

In-mold construction

MPS EVO fit system – flexible 4-point adjustment system

Anti-fog and anti-scratch visor

SIZE

SM 52 - 54 cm | 20.5 - 21.3"

MD 55 - 57 cm | 21.7 - 22.4"

LG 58 - 60 cm | 22.8 - 23.6"

WEIGHT

MD 345g | 0.76lb

ACCESSORIES

Extra paddings

Catlike bag

Catlike protective case

TECHNOLOGIES



TIME TRIAL PRO HELMET

RAPID TRI



COLORS

CHRONO / PURE BLACK MATTE



SM 7100900003

MD 7100900002

LG 7100900001

CHRONO / BRIGHT WHITE GLOSS



SM 7100900006

MD 7100900005

LG 7100900004

FEATURES

The choice between the best aerodynamic performance and increased ventilation with little compromise to the performance

In-mold construction

MPS EVO fit system – flexible 4-point adjustment system

Anti-fog and anti-scratch visor

TECHNOLOGIES



SIZE

SM 52 - 54 cm | 20.5 - 21.3"

MD 55 - 57 cm | 21.7 - 22.4"

LG 58 - 60 cm | 22.8 - 23.6"

WEIGHT

MD 345g | 0.76lb

ACCESSORIES

Extra paddings

Catlike bag

Catlike protective case

HELMETS





ENDURO MTB HELMET

YELMO

The new restyled Yelmo elevates its performance with renewed looks. The front visor was re-designed and now boasts a cleaner profile, with improved locking mechanism and broad adjustability in 9 different positions.

The back profile is now completely smooth, whilst keeping compatibility with goggles. Now, Yelmo uses the lighter and more reliable MPS EVO fit system. The strap system features a Fidlock buckle, making it easier to un-buckle the helmet while wearing all-mountain gloves. Ventilation is very important on all-mountain rides, so the Yelmo features a total of 10 air inlets and 11 air outlets that will keep your head cool.

This helmet also allows you to integrate an action camera or a headlight so you can capture your performance or improve your visibility on the night rides.

The performance is improved with the use of MIPS® low friction layer that boosts safety on angled impacts.

ENDURO MTB HELMET

YELMO

Mips

ACTION CAMERA MOUNT

Includes easier-to-use integrated mounting area to place an action camera to capture your performance.

EXCEPTIONAL COVERAGE

Extended protection around the head to give extra protection in sensible areas.



FIDLOCK BUCKLE

Combines magnetic and mechanical fastening into an intuitive and user-friendly fastener, to open and close the helmet strap in no time at all.

MIPS® EVOLVE

Rotational management system that not only can lower the energies transferred to the head during an impact or crash, but also does this with added style, comfort and fit.

FEATURES

In-mold construction with 2 shells
 Detachable visor adjustable in 9 different positions
 Action camera or headlight mount
 Fidlock magnetic buckle
 MPS EVO fit system – flexible 4-point adjustment system
 MIPS® Evolve low friction layer
 Googles compatibility

SIZE

SM 54 - 56 cm | 21.3 - 22.0"
MD 57 - 59 cm | 22.4 - 23.2"
LG 60 - 61 cm | 23.6- 24.0"

WEIGHT

MD 360g | 0.79lb

ACCESSORIES

Extra paddings
 Catlike bag

COLORS

PURE BLACK GLOSS / PURE BLACK MATTE



Mips

SM 7101000003
MD 7101000002
LG 7101000001

BRILLIANT WHITE / MIRAGE GRAY MATTE



Mips

SM 7101000006
MD 7101000005
LG 7101000004

GOLD FLAME / BLANC DE BLANC MATTE



Mips

SM 7101000009
MD 7101000008
LG 7101000007

PESTO / MIRAGE GRAY MATTE



Mips

SM 7101000012
MD 7101000011
LG 7101000010

TECHNOLOGIES



TRAIL MTB HELMET

LEAF

The Leaf is our offer for the entry level all mountain rider. It boasts an adjustable front visor for increased visibility in difficult conditions. Comfort is kept at a high level with plush padding and the MPS EVO fit system.

The Leaf is a helmet dedicated to the mountain bike rider who values performance and great design. It provides great protection in a comfortable, safe, and stylish package.



TRAIL MTB HELMET

LEAF

HEXAGON CONSTRUCTION

The air intakes have been strategically positioned so that any impact will affect more than one internal structure: in the event of a crash, the energy generated will be spread through the honeycomb type structure, significantly increasing the head's protection.



BUG NET

Fitted with an integrated insect-protection net for extra safety during each riding.

VDIVISOR

Exclusive divisor that keeps the retention straps away from your ears granting you maximum comfort during usage.

FEATURES

In-mold construction with 1 shell
 Adjustable front visor
 MPS EVO fit system – flexible 4-point adjustment system
 Googles compatibility

SIZE

MD 54 - 57 cm | 21.3 - 22.4"
LG 58 - 60 cm | 22.8 - 23.6"

WEIGHT

MD 275g | 0.61lb

ACCESSORIES

Extra paddings
 Catlike bag

COLORS

CARBON BLACK MATTE



MD 7101200002
LG 7101200001

GLACIER GRAY MATTE



MD 7101200005
LG 7101200004

BURGUNDY MATTE



MD 7101200008
LG 7101200007

FROSTY SPRUCE MATTE



MD 7101200011
LG 7101200010

MAJOLICA BLUE MATTE



MD 7101200014
LG 7101200013

TECHNOLOGIES





SPORT ALLROAD HELMET

KOMPACT'O

The Kompact'O helmet is a reduced-volume, and lightweight sport helmet. This hall of fame model continues to boast an attractive design that is popular amongst all riders.

Developed to combine functionality with aesthetics, Kompact'O is an ideal companion for your everyday rides. Its unique look will make you distinguish yourself from the crowd while being very well ventilated and safe.

The Kompact'O has a visor included that you can use depending on the riding style and a front insect protective net.

SPORT ALLROAD HELMET

KOMPACT'0

IN-MOLD CONSTRUCTION

A current production technology that makes ultra-lightweight helmets with a high level of firmness and maximum protection.



BUG NET

Fitted with an integrated insect-protection net for extra safety during each riding.

VDIVISOR

Exclusive divisor that keeps the retention straps away from your ears granting you maximum comfort during usage.

FEATURES

Urban style
 Superior comfort and ventilation
 Front insect protective net
 Visor included (you can choose to use the Kompact'O with or without the visor)
 MPS EVO fit system – flexible 4-point adjustment system

SIZE

SM 52 - 54 cm | 20.5 - 21.3"
MD 55 - 58 cm | 21.7 - 22.8"
LG 59 - 61 cm | 23.2 - 24.0"

WEIGHT

MD 280g | 0.62lb

ACCESSORIES

Extra paddings
 Catlike bag

COLORS

BLACK MATTE



SM 7100600003
MD 7100600002
LG 7100600001

WHITE MATTE



SM 7100600006
MD 7100600005
LG 7100600004

RED MATTE



SM 7100600009
MD 7100600008
LG 7100600007

YELLOW FLUO MATTE



SM 7100600012
MD 7100600011
LG 7100600010

VISERA

You can choose to use the Kompact'O with or without the visor.



TECHNOLOGIES



JUNIOR ALLROAD HELMET

KITTEN

The Kitten is our premium offer for the junior riders. This helmet is inspired by the Catlike philosophy and style, and it easily adapts to the needs of the junior riders, or to a more commute riding style.

Built with in-mold construction and with shock-absorbing helmet material, the Kitten was designed to protect the riders so they can explore outdoors or commute safely.

The Kitten performs as great as it looks. It has a sleek shape with 27 generous ventilation channels for optimum airflow and breathability. It features a MPS EXE fit system, which provides comfort and stability for fast and safe adjustments which make Kitten ready for any ride.





JUNIOR ALLROAD HELMET

KITTEN

HEXAGON CONSTRUCTION

The air intakes have been strategically positioned so that any impact will affect more than one internal structure: in the event of a crash, the energy generated will be spread through the honeycomb type structure, significantly increasing the head's protection.



IN-MOLD CONSTRUCTION

A current production technology that makes ultra-lightweight helmets with a high level of firmness and maximum protection.

FEATURES

Urban style

In-mold construction with shock-absorbing helmet material

27 vents for less sweat and a more comfortable ride

Lightweight design

SIZE

XS 49 - 52 cm | 19.3 - 20.5"

SM 52 - 55 cm | 20.5 - 21.7"

MD 55 - 58 cm | 21.7 - 22.8"

WEIGHT

SM 260g | 0.57lb

ACCESSORIES

Extra paddings

Catlike bag

COLORS

DARK GRAY MATTE



XS 7101400018

SM 7101400017

MD 7101400019

ORANGE MATTE



XS 7101400024

SM 7101400023

MD 7101400025

RED MATTE



XS 7101400027

SM 7101400026

MD 7101400028

AQUAMARINE MATTE



XS 7101400021

SM 7101400020

MD 7101400022

TECHNOLOGIES





SHOES



MIXINO R3

F O R E V E R Y R I D E

SHOES

C A T L I K E T E C H

3K CARBON SOLE





Every watt of power generated while riding is transferred to the bike through the soles of the feet. That's why our shoes are engineered for ultimate power transfer and advanced fitting. Built to withstand the toughest conditions, they feature an arch area for better stability and unprecedented durability.

The stiffness of the advanced 3K full carbon composite sole provides efficient power transfer and a responsive pedal feel. Plus, it saves weight and delivers increased performance. With a stiffness index rating of 10, this outsole is the stiffest in the Catlike product line.





ROAD SHOES

MIXINO RC1

To make a complete road race shoe, we thought about offering the most up-to-date technology to handle even the longest and toughest roads.

The Mixino RC1 is a must-have when it comes to exceptional performance. The lightweight and efficient microfibers mold perfectly to your foot and provide exceptional comfort, no matter how long or rigorous the ride is. Our microfibers are carefully selected to ensure maximum durability and are designed with advanced perforations for better breathability.

The ergonomic last is designed to offer maximum comfort to every user while maintaining a strong grip on the heel for the steep and wet races, so you don't have to worry too much about anything but excelling on the road. The insole is designed to provide optimal arch support for improved knee alignment and reducing metatarsal compression.

The stiffness of the advanced 3K full carbon composite sole provides efficient power transfer and responsive pedaling feel, while our micro-adjustable dial system offers fine-tune fitting ensuring maximum performance without compromising comfort.

ROAD SHOES

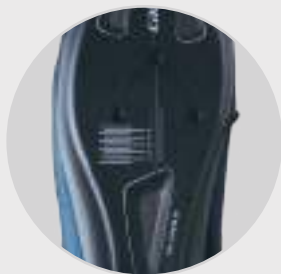
MIXINO RC1

DUAL DIAL CLOSURE

A dual dial closure for a fine-tuning fit and an accurate pressure distribution.

HIGH-QUALITY MICROFIBRES

The efficient microfibres perfectly mold to the cyclist's foot, offering supreme comfort.



ULTIMATE STIFFNESS

Full carbon 3K weave sole, developed with the best carbon fibers technologies, excellent stiffness avoiding loss of performance.

FEATURES

3K full carbon sole
 Stiffness index: 10
 High-quality Mycro fibers, with sustainable materials
 Breathable and with laser cutted air vents

SIZE

39-47 24.9 - 30.2cm | 9.8 - 11.9"

WEIGHT

43 265g | 0.58lb

COLORS

BLACK MATTE



39 7200100002 44 7200100007
 40 7200100003 45 7200100008
 41 7200100004 46 7200100009
 42 7200100005 47 7200100010
 43 7200100006

WHITE GLOSS



39 7200100012 44 7200100017
 40 7200100013 45 7200100018
 41 7200100014 46 7200100019
 42 7200100015 47 7200100020
 43 7200100016

GREEN FLUO MATTE



39 7200100022 44 7200100027
 40 7200100023 45 7200100028
 41 7200100024 46 7200100029
 42 7200100025 47 7200100030
 43 7200100026

DARK GRAY MATTE



39 7200100032 44 7200100037
 40 7200100033 45 7200100038
 41 7200100034 46 7200100039
 42 7200100035 47 7200100040
 43 7200100036

OPAL BLUE MATTE



39 7200100041 44 7200100046
 40 7200100042 45 7200100047
 41 7200100043 46 7200100048
 42 7200100044 47 7200100049
 43 7200100045

TECHNOLOGIES





ROAD SHOES

WHISPER R1

Developed to offer you the highest performance, it features a light and stiff reinforced composite sole, which will make these shoes your best ally in the most demanding rides.

The use of premium mycro fibers upper combined with an ergonomically fit construction will make this shoe feel like an extension of your foot.

The Whisper R1 features an anti-slip insert at the heel and a high density foam footbed. It's also highly breathable thanks to its laser cutted air vents.

Its fastening system will adjust to the foot shape, ensuring that all of your power output is going into the pedals as efficiently as possible.

ROAD SHOES

WHISPER R1

HIGH-QUALITY MICROFIBRES

The efficient microfibres perfectly mold to the cyclist's foot, offering supreme comfort.

NEUTRAL ARCH DESIGN

Provide your feet with enough support while riding.



REINFORCED COMPOSITE SOLE

Excellent balance between weight and stiffness giving the feeling of a competition shoe.



FEATURES

Rigid and light reinforced composite sole
 Stiffness index: 8
 Neutral arch design
 Anti-slip insert at the heel
 Premium extra light Mycrofiber
 Outdoor breathable and with laser cutted air vents
 High density foam footbed, hypoallergenic and high establiity

SIZE

39-47 24.9 - 30.2cm | 9.8 - 11.9"

WEIGHT

43 280g | 0.62lb

COLORS

BLACK MATTE



39 7200300002 44 7200300007
 40 7200300003 45 7200300008
 41 7200300004 46 7200300009
 42 7200300005 47 7200300010
 43 7200300006

WHITE GLOSS



39 7200300012 44 7200300017
 40 7200300013 45 7200300018
 41 7200300014 46 7200300019
 42 7200300015 47 7200300020
 43 7200300016

DARK GRAY MATTE



39 7200300022 44 7200300027
 40 7200300023 45 7200300028
 41 7200300024 46 7200300029
 42 7200300025 47 7200300030
 43 7200300026

TECHNOLOGIES



MTB SHOES

WHISPER X1

Developed for athletes who want power transfer without sacrificing durability, the Whisper X1 offers you a perfect grip on muddy or wet terrains and extra front protection, so you do not need to worry about anything else but enjoying the trail.

Its reinforced composite sole combines great rigidity with extreme grip thanks to its infused elastomer inserts. The ergonomic and the high-quality arch construction adapt to the shape of your foot while the premium Mycro fiber will make even the toughest ride feel like a joy.

Our fastening system ensure an adjustable comfort with a secure fit designed for all-day comfort and performance, no matter the type of your ride.



MTB SHOES

WHISPER X1

HIGH-QUALITY MICROFIBRES

The efficient microfibres perfectly mold to the cyclist's foot, offering supreme comfort.



REINFORCED COMPOSITE SOLE

Excellent balance between weight and stiffness giving the feeling of a competition shoe.

EXTRA PROTECTION

Front a rear protection for greater durability and confident traction.

FEATURES

- Perfect grip on muddy or wet terrain
- Light reinforced composite sole with elastomer inserts
- Stiffness index: 7
- Maximum comfort without compromise performance
- Premium extra light Mycro fiber
- Front protection for greater durability
- Breathable and with laser cutted air vents
- High density foam footbed, hypoallergenic and high establiity

SIZE

39-47 24.9 - 30.2cm | 9.8 - 11.9"

WEIGHT

43 335g | 0.74lb

COLORS

BLACK MATTE



39	7200400002	44	7200400007
40	7200400003	45	7200400008
41	7200400004	46	7200400009
42	7200400005	47	7200400010
43	7200400006		

DARK GRAY MATTE



39	7200400012	44	7200400017
40	7200400013	45	7200400018
41	7200400014	46	7200400019
42	7200400015	47	7200400020
43	7200400016		

RED MATTE



39	7200400022	44	7200400027
40	7200400023	45	7200400028
41	7200400024	46	7200400029
42	7200400025	47	7200400030
43	7200400026		

TECHNOLOGIES

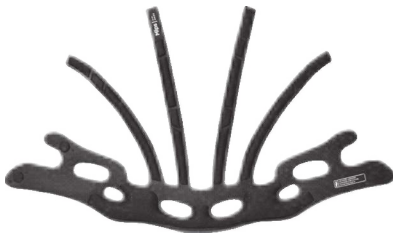


SPARE PARTS



HELMETS

PADDING SET MIXINO EVO



SM 7060020035
MD 7060020036
LG 7060020037

PADDING SET KILAUEA



SM 7060020001
MD 7060020002
LG 7060020003

PADDING SET VENTO



SM 7060020004
MD 7060020005
LG 7060020006

PADDING SET KOMPACT'O



SM 7060020013

PADDING SET RAPID & RAPID TRI



SM 7060020027
MD 7060020028
LG 7060020029

PADDING SET YELMO



SM 7060020030
MD 7060020031
LG 7060020032

PADDING SET LEAF



MD 7060020033
LG 7060020034

PADDING SET KITTEN



7060020010

RETENTION SYSTEM MPS EVO



7060020016

RETENTION SYSTEM MPS EXE



7060020017

RETENTION SYSTEM MPS OVAL



7060020038

SHOES

TOE FOR MTB SOLES PAIR



7060020018

REPLACEMENT DIAL KIT WINCH PAIR



7060020019

REPLACEMENT DIAL KIT ATOP PAIR



7060020039



ACCESSORIES



CATLIKE

ACCESSORIES

CYCLING BIDON

750 ML

ORANGE



7600100004

THERMAL 500 ML

ORANGE



7600100002

TOOL BOTTLE

600 ML

DARK GRAY



7600100003

PREMIUM CYCLING CAP

BLACK



7500100013

CYCLING MUSETTE

BLACK



7500100014

ORANGE



7500100015

MERCHANDISING

M E R C H A N D I S I N G



CATLIKE

MERCHANDISING

CATLIKE T-SHIRT



SM 7500100005 XL 7500100008
MD 7500100006 XXL 7500100009
LG 7500100007

CATLIKE PROMOTIONAL BIDON 500 ML



7600100001

CATLIKE NECK STRAP



7500100016

CATLIKE CYCLING CAP



7500100012

CATLIKE HELMET BAG



7500100032

CATLIKE SHOPPING BAG



7500100019

CATLIKE STICKERS



10 CM 7500100020
40 CM 7500100021
100 CM 7500100022

CATLIKE AUTHORIZED DEALER STICKER



7500100026

CATLIKE TRANSPORT BAG



7500100025

CATLIKE CATALOG



ENGLISH 7500100028
SPANISH 7500100029

CATLIKE LEAFLET



ENGLISH 7500100031
SPANISH 7500100030

CATLIKE NOTEBOOK



7500100003

CATLIKE PROMOTIONAL TENT w/SIDEWALLS



MD 3 x 3 M 7500100017
LG 3 x 6 M 7500100018

CATLIKE TNT BANNER



300 x 80 CM 7500100004

CATLIKE BEACH FLAG



MD 290 CM 7500100001
LG 390 CM 7500100002

CATLIKE LOGO MAGNETIC BANNER



990 x 300 MM 7500100023

CATLIKE LIFESTYLE MAGNETIC BANNER



990 x 300 MM 7500100024



CATLIKE

SIZE GUIDE

These size charts and conversions are meant to serve as a guide. We recommend you try-on before riding to ensure full comfort and performance.

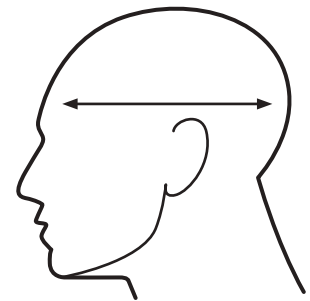
HELMETS

Wrap a measuring tape around your head, keeping the tape level from front to back.

Each helmet indicates the right measurements for each size, in cm. Once you've got the right size, you can adjust the fit.

⚠ For the comfort and safety of our athletes, and to help them extend the life of their cycling helmets we suggest the replacement of its paddings, depending on its use:

Hard use: **Every Year (±)**
 Medium use: **Every 2 Years**
 Soft use: **Every 3 Years**



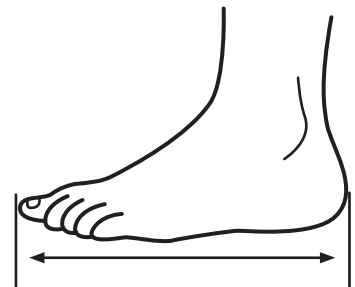
This recommendation does not invalidate the replacement of the helmet in the event of wear or in the event of a crash. Any helmet submitted to an impact must be destroyed and replaced even if it does not show any visible damages - The helmet shock absorption capacity might be diminished.

SHOES

Whatever type of bicycle or style you ride, or how often you hit the road, your shoes must fit properly.

To help you make an informed decision, this size guide will assist you to determine your shoe size.

EU	US	UK	inches	cm
39	6 ^{1/4}	5 ^{1/4}	9.8	24.9
40	7	6	10.0	25.5
41	8	7	10.3	26.2
42	8 ^{3/4}	7 ^{3/4}	10.6	26.9
43	9 ^{3/4}	8 ^{3/4}	10.8	27.5
44	10 ^{1/2}	9 ^{1/2}	11.1	28.2
45	11 ^{1/4}	10 ^{1/4}	11.4	28.9
46	12 ^{1/4}	11 ^{1/4}	11.6	29.5
47	13	12	11.9	30.2





TECHNOLOGIES



CATLIKE

TECHNOLOGIES

HELMETS



IN-MOLD CONSTRUCTION

Our helmets feature an in-mold construction, a current production technology that makes ultra-lightweight helmets with a high level of firmness and maximum protection.

Featured in models: Mixino Evo, Kilauea, Vento, Whisper, Kompact'O, Kitten, Rapid, Rapid Tri, Yelmo, Leaf.



DUAL FLOW

The head is the main temperature sense in our body. Excessive heat can cause symptoms of fatigue, dizziness and even dehydration. Catlike Dual Flow system maximizes ventilation: the internal channels provide constant airflow inside the helmet, avoiding overheating.

Featured in models: Mixino Evo, Kilauea, Vento, Whisper, Rapid, Rapid Tri, Yelmo, Leaf, Kompact'O, Kitten.



LCP (LIQUID-CRYSTAL POLYMER)

Maintaining the helmet's structural integrity in case of a more severe impact is key to increase your safety.

Our models with lateral Polyamide roll cage have increased impact resistance and stiffness while maintaining excellent ventilation properties and low weight.

Featured in models: Whisper.



MIPS® EVOLVE

MIPS® Evolve is a rotational management system that not only can lower the energies transferred to the head during an impact or crash, but also does this with added style, comfort and fit. The system consists of a Low Friction Layer that is less than 1mm thick with a low friction coating that lessens the friction towards the energy absorbing layer. It is designed to work together with the ventilation channels of each helmet.

Featured in models: Kilauea, Vento, Whisper.



MPS EVO

The innovative MPS (Multi-Position-System) retention system allows optimizing the comfort of the user due to its 4-point adjustment possibilities: dial system, lateral slide paddings, rear width, and height adjustment.

Featured in models: Mixino Evo, Kilauea, Vento, Whisper, Kompact'O, Rapid, Rapid Tri, Yelmo, Leaf.



ARAMID ROLL CAGE

Aramid roll cage is a robust, resistant fiber that is widely used in the aerospace sector, ballistics, and self-protection. It is a material used for its strength properties the entire mechanical performance.

Therefore, it improves impact energy absorption, and increasing head protection maintaining a minimum weight.

Featured in models: Mixino Evo, Kilauea, Vento.



VDIVISOR

Our helmets feature an exclusive divisor part which will grant you maximum comfort during each usage. The way the straps are divided and easily positioned below the ears, on the jaw, means that they are easily adaptable to the unique user's face.

Featured in models: Mixino Evo, Kilauea, Vento, Whisper, Kompact'O, Rapid, Rapid Tri, Yelmo, Leaf.



HEXAGON

The unique design of Catlike's helmets is not only based on aesthetics. The air intakes have been strategically positioned so that any impact will affect more than one internal structure: in the event of a crash, the energy generated will be spread through the honeycomb-type structure, significantly increasing the head's protection.

Featured in models: Mixino Evo, Kilauea, Vento, Whisper, Kompact'O.



MIPS® AIR NODE

Dressed up as padding it stays unnoticed until needed. The MIPS® Air technology is integrated into the padding of the helmet and enables the 10-15mm of relative movement between the energy absorbing layer and the padding.

By being integrated into the padding, the system is as light as it gets and designed to fit each specific helmet and size, barely being visible to the user and adding only limited weight to the helmet.

Featured in models: Mixino Evo.



MPS OVAL

The new MPS Oval represents an evolution of the MPS eVo system. Now, more focused on the adjustment to the cyclist's head and with greater precision, this system can be adjusted in height at 3 points, and also have more room for a ponytail.

Featured in models: Whisper.



BUG NET

Some of our models are outfitted with an integrated insect net for extra safety.

Featured in models: Kompact'O, Leaf.

SHOES



FULL CARBON 3K

One of our bets is the full carbon 3k weave sole, developed with the best carbon fibers technologies, excellent stiffness avoiding loss of performance. Its "extra flow" air system creates circulation, maintaining comfort even on hotter days.

Featured in models: Mixino RC1.



MYCRO

Catlike uses increasingly modern technology systems in the textile. The hi-tech microfibre – Mycro – guarantees exceptional resistance to abrasion, great breathability, and high performance in sports.

Featured in models: Mixino RC1, Whisper R1, Whisper X1.



ERGONOMIC

Our shoes are designed to maximize comfort without sacrificing performance. The shoe has a wrap-around construction that wraps your foot to hold it snug and hit back into the heel where anti-slip lining keeps the heel firmly in place. This ergonomic adjustment will avoid looseness between the shoe and the cyclist's foot.

Featured in models: Mixino RC1, Whisper R1, Whisper X1.



BREATHABLE TEXTILE

Our shoes are made from a blend of lightweight, breathability, and flexible material. The benefits of breathable textile materials combined with their non-solvent methods of creation deem make them a step forward in an ever-increasing environmentally conscious.

Featured in models: Mixino RC1, Whisper R1, Whisper X1.



REINFORCED COMPOSITE

Our reinforced composite sole has an excellent balance between weight and stiffness giving the feeling of a competition shoe. Its breathable insole offers extra comfort and stability to the foot inside the shoe, even in moments of greater intensity.

Featured in models: Mixino RC1, Whisper X1.



SUSTAINABLE MATERIALS

The high-quality microfibers used in the range of our shoes are created with ecological and biodegradable solvents to reduce our ecological footprint. These materials also contribute to the lightness and ergonomics of the shoes, which are highly resistant and washable.

Featured in models: Mixino RC1, Whisper R1, Whisper X1.



FASTENING SYSTEM

This fastening system offers the possibility of tightening and untightening the wire with one hand only thanks to its dial. It also allows cyclists to fit it to their foot shape, ensuring maximum performance without compromising on comfort.

Featured in models: Mixino RC1, Whisper R1, Whisper X1.



HYDROFUGE

When it comes to textile technologies, our range offers a Hydrofuge solution thanks to its water repellent feature. Fabrics that are not only water-repellent but also breathable, preventing sweat retention.

Featured in models: Mixino RC1, Whisper R1, Whisper X1.

COMMON FEATURES



REFLECTIVE STICKERS

Whether if you are commuting on short winter days or riding by night, the reflective details on our helmets and shoes will increase your visibility on the road.

Featured in all helmet's and shoes models.

CATLIKE

RANGE OVERVIEW

PRO ROAD HELMETS

COMP ROAD HELMETS

TIME TRIAL PRO HELMETS



MIXINO EVO

KILAUEA

VENTO

WHISPER

RAPID

RAPID TRI

VENTILATION CHANNELS

38

24

18

29

-

4

WEIGHT

230g

240g

250g

/

345g

345g

STANDARDS

EN1078

EN1078

EN1078

EN1078

EN1078

EN1078

MIPS® TECHNOLOGY

AIR NODE

EVOLVE

EVOLVE

EVOLVE

-

-

TYPE OF USE

RACE

ALL ROUNDER

AERO

RACE

CHRONO

TRIATHLON

REFLECTIVE DETAILS

●

●

●

●

●

●

SUNGLASS COMPATIBILITY

●

●

●

●

-

-

VISOR

-

-

-

-

●

●

TYPE OF SOLE

-

-

-

-

-

-

STIFFNESS INDEX

-

-

-

-

-

-

FASTENING SYSTEM

-

-

-

-

-

-

BE CATLIKE B

MTB HELMETS

COMP ROAD HELMETS

ROAD SHOES

MTB SHOES



YELMO

LEAF

KOMPACT'O

KITTEN

MIXINO RC1

WHISPER R1

WHISPER X1

21	23	21	27	-	-	-
/	275g	280g	260g	235g	280g	335g
EN1078	EN1078	EN1078	EN1078	-	-	-
EVOLVE	-	-	-	-	-	-
ENDURO	TRAIL	SPORT	JUNIOR	ROAD	ROAD	MTB
●	●	●	●	●	●	●
●	●	●	-	-	-	-
●	●	●	-	-	-	-
-	-	-	-	3K FULL CARBON	REINFORCED COMPOSITE	REINFORCED COMPOSITE
-	-	-	-	10	8	7
-	-	-	-	ATOP	WHINCH	WHINCH

BE DIFFERENT





Centro de Negocios Marla Center
Av. Dr. Pedro Guillen, 5
30100 – Murcia, Spain

catlike@catlike.com

EXPLORE.
FEEL FREE.
CONNECT.

